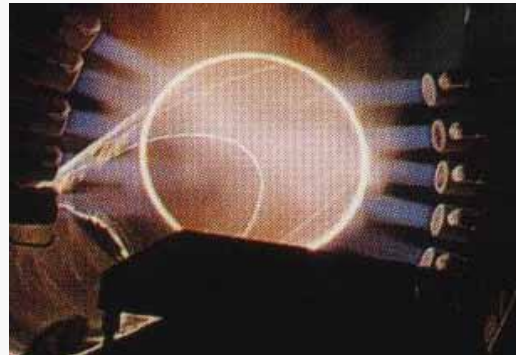


COMPANY PROFILE

STA

(Semiconductor Technology America, Inc.)



OUTLINE

Establishment	April, 1999
President	B.H Jang
Address (Locations)	<u>Head Office/Factory</u> 4773 Pacific Avenue Eugene, OR 97402 U.S.A TEL:1-541-344-1170 FAX:1-541-344-1187
Floor area	Site Area: 6,000 m ² Building: 5,000 m ²
Line of products	1. A full range of quartz ware, silicon ware, and Ceramic product for semiconductor industry. 2. Wafer Transfer handler Robot Refurbishment for wafer processing industry. 3. AMAT Heater for Semiconductor industry.
Employees	25 Employees
Web Site	www.stamerica.com

HISTORY

1999

Establishment

2003

Acquired ISO 9001 ; 2000 Certification

2004

Won a US\$3million Export Tower Prize

2006

Won a US\$5million Export Tower Prize

FACILITIES



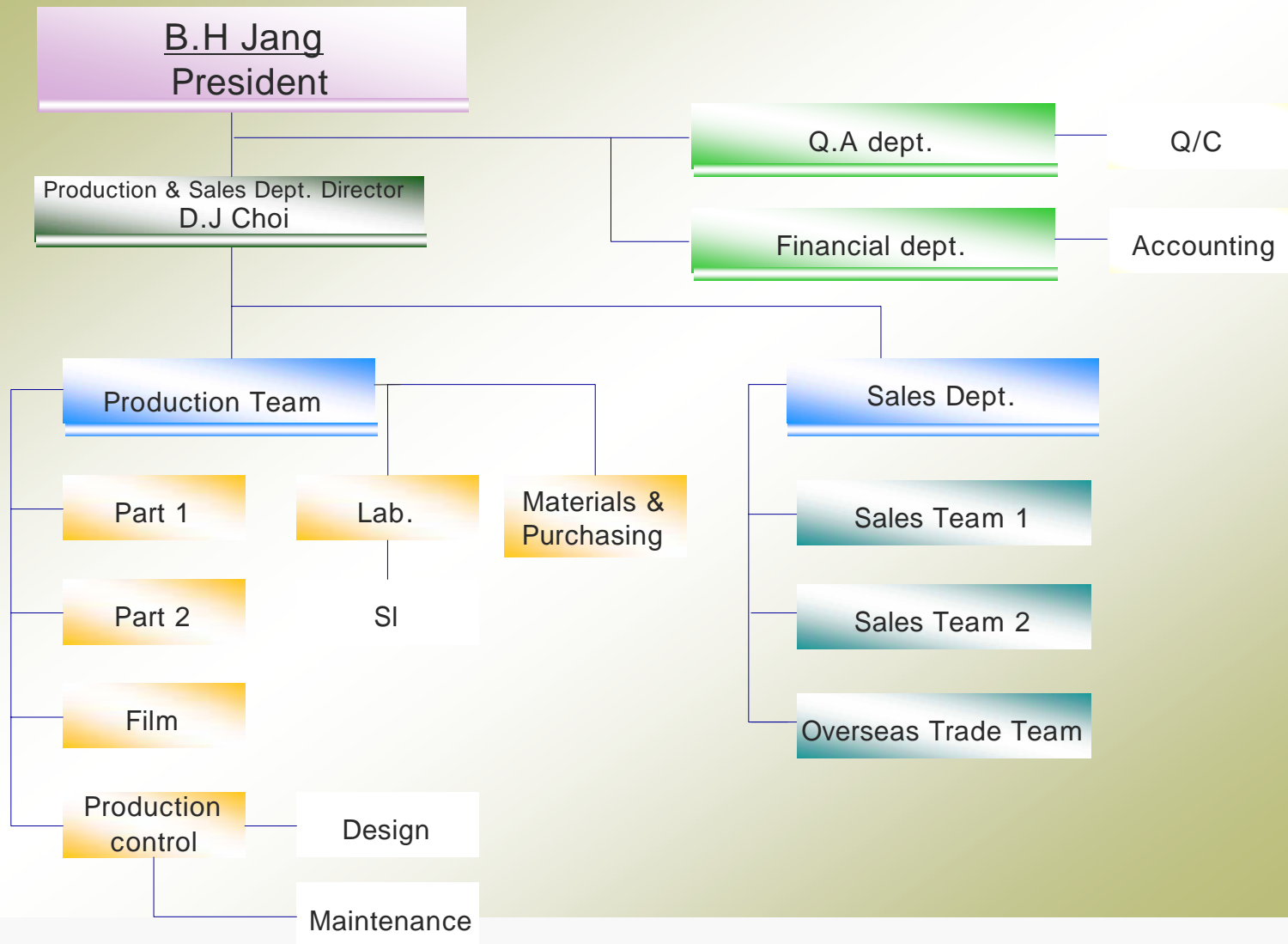
Site Area : 6,000 m²

Building: 5,000 m²



Facility for raw material >>

Organization Chart



MAJOR CUSTOMERS

Customers	<u>Customers Market Share/Percentage</u> (Y2005)	<u>Remarks</u>
	<p data-bbox="733 421 1408 464"><u>Local (70 % of total sales)</u></p> <ul data-bbox="694 478 1170 892" style="list-style-type: none"> - Hynix - Fair Child Semiconductor - Dongbu - Anam - LG Siltron - MEMC Korea - KEC - Samsung (Onyang Plant) - Etc. <p data-bbox="733 906 1380 949"><u>World wide (30 % of total sales)</u></p> <ul data-bbox="694 963 942 1320" style="list-style-type: none"> - SINGAPORE - USA - CHINA - JAPAN - TAIWAN - EUROPE - MALAYSIA 	

Products

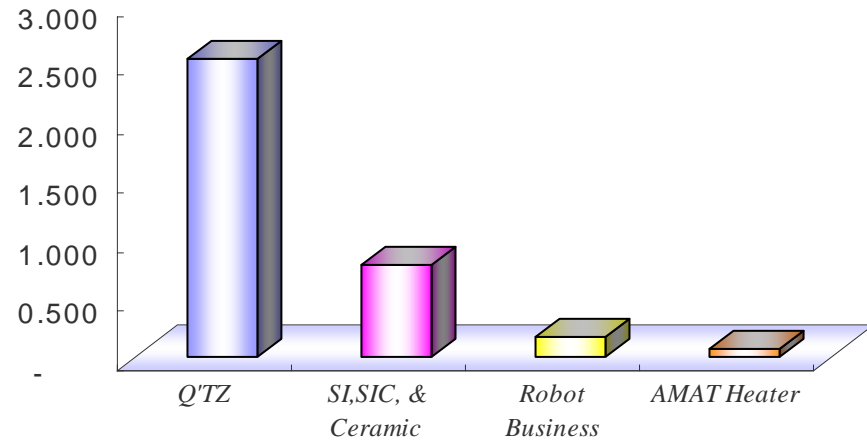
Div.	Quartz Ware	Silicon Ware &	Robot Refurbishment	AMAT Heater
No.		Ceramic Product		
1	Quartz Boats	Si Electrode	BROOKS MAG 7 & ATR 7	DXZ Heater(8")
2	Process Tubes	Si Focus Ring	BROOKS MTR 5	WXZ Heater(6" & 8")
3	Bell Jars	Others	RORZE FABS ROBOT	TXZ Heater(8")
4	Windows		PRI ROBOT	
5	Bath		MECS ROBOT	

2006~2007 Sales Status

2006

(Million USD)

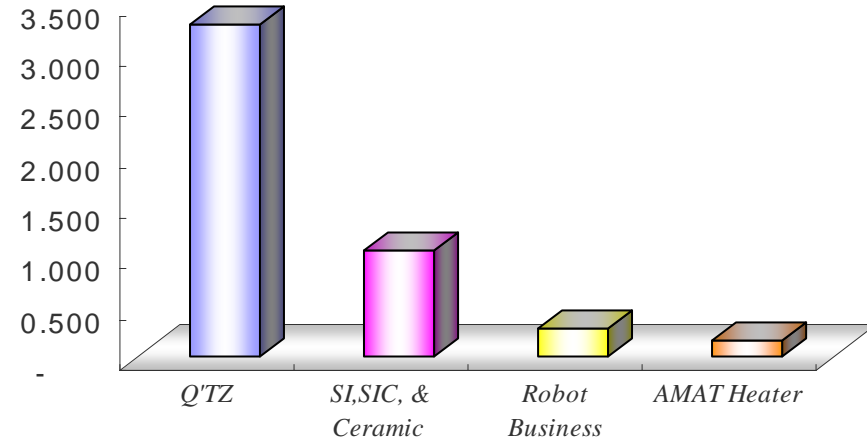
Items	Sale
Q'TZ	2.518
SI,SIC, & Ceramic	0.781
Robot Business	0.177
AMAT Heater	0.071
TOTAL	3.547



2007

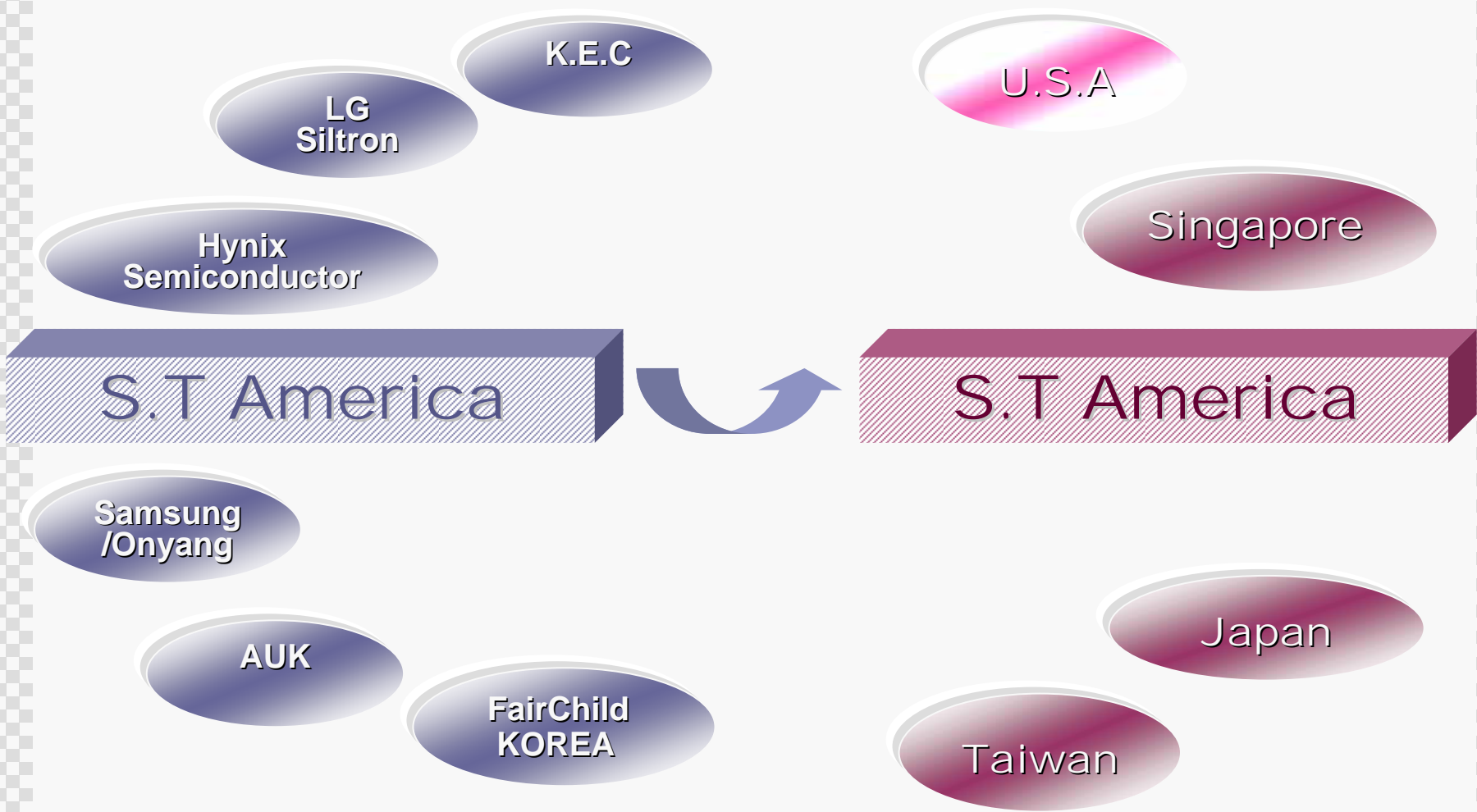
(Million USD)

Items	Sale
Q'TZ	3.286
SI,SIC, & Ceramic	1.048
Robot Business	0.286
AMAT Heater	0.153
TOTAL	4.773



DOMESTIC

GLOBAL

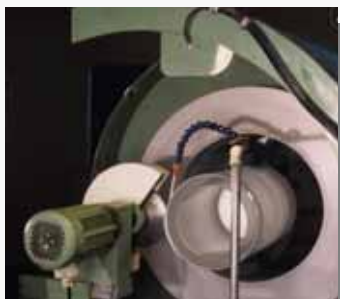


PRODUCTION LINE

< Machined work >

Quartz / Silicon Fabrication

Machine / lapping



Grinding & Milling



Machining



Lapping-Polishing



Slotting/ CNC



Laser

Machining/grinding



Etching



Clean room



Polishing



PRODUCTION LINE

< Fire work >

Quartz Fabrication



Bench – Welding

- Tanks, Boat, Pedestal & other welding products



Glass blowing Lathe

Tubes Fabrication for Diffusion Furnaces

Production Line

Wafer Packing Bags



Wafer Packing Bags



Produced, Inspected & Packed in Clean room !

❖ QUARTZ WARE



12" OUTER TUBE



12" BOAT & PEDESTAL



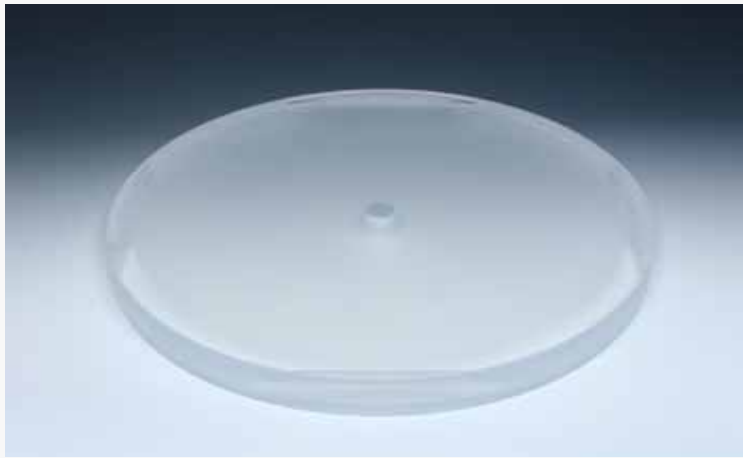
12" PEDESTAL ()



PLASMA DISTRIBUTE PLATE



UPPER QUARTZ RING



HPQ WINDOW

❖ **QUARTZ WARE**

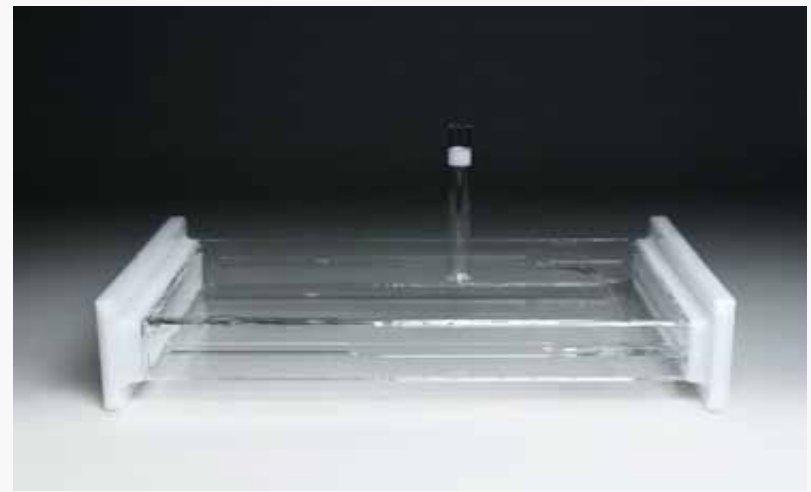
❖ QUARTZ WARE



HPQ INJECTOR



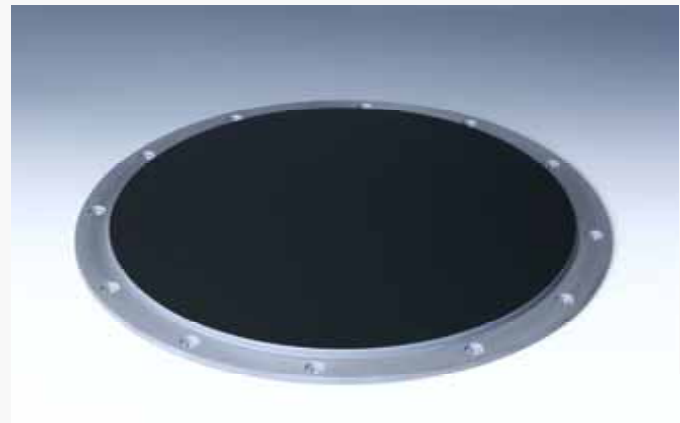
12" WAFER GUIDE



QUARTZ CHAMBER



12" TOP RING



8" & 12" SI ELECTRODE



8" INNR FOCUS RING & 12" SI
FOCUS RING

◆ **SILICON WARE**

General Info - Quartz

Raw Material Source	<ul style="list-style-type: none"> - GE Quartz - Toshiba Ceramics - Tosoh - Heraeus / ShinEtsu - Saint-Gobain - Others
Main Diffusion Parts	<ul style="list-style-type: none"> - Outer Tube / Inner Tube - Process Tube / Reactor Tube - Pedestal - Boat - Injector - Others
Etch, Thin-Films, Wet Station	<ul style="list-style-type: none"> - Quartz Rings for Etcher, Thin-Films - Quartz Tanks for Wet Station - Other Quartz Spare Parts are available.
Lead Time	<p>Basically, our lead time for each item is 3 weeks after receipt customer's order. <u>But, in the particular cases, we can make the shorter lead time.</u></p>

Material Composition - Quartz

ppm by weight

Type	Maker	Al	Fe	Na	K	Cu	B	OH ⁻	Remarks
GE - 214	GE	14	0.2	0.7	0.6	<0.05	<0.2	10	
GE - 124		14	0.2	0.7	0.6	<0.05	<0.2	<5	
GE - 224		14	0.2	<0.1	<0.2	<0.01	<0.2	10	
N	TOSOH	8	0.2	0.5	0.2	0.01		200	Smooth Quartz Disc
NP		8	0.1	0.1	0.1	0.01		200	
PN	QSIL	16	0.8	0.9	0.9	<0.05		15~45	Rings For Etcher
TSC - 2	SAINT-GOBAIN	17	0.2	0.7	0.5	<0.01		170	
TSC - 3		15	0.1	0.1	0.2	<0.01		170	
T - 2030	TOSHIBA	8	0.5	1.0	1.0	0.02	0.3	1	

Other Materials can be available!

Our high level inspection in Clean Room assures the best quality

Quality Assurance – Company That Acquired **ISO-9001:2000 Certification**

- Our high level inspection in Class 1000 Clean Room assures the best quality
- Products design and inspection for various boats and precise tolerance adopted products using 3-dimensional equipment.
- The inspection shall be carried out by our skilled QA/QC engineers with the measuring instruments in accordance with our ISO-9001:2000 procedure.

Inspection Point

- 1) Dimension (Drawing Spec.)
- 2) Welding
- 3) Annealing
- 4) Scratch
- 5) Bubble
- 6) Cleaning
- 7) Flatness / Roughness
- 8) Others



Our high level inspection in Clean Room assures the best quality

Quality Assurance – Company That Acquired **ISO-14001:2004 Certification**

- Our high level inspection in Class 1000 Clean Room assures the best quality
- Products design and inspection for various boats and precise tolerance adopted products using 3-dimensional equipment.
- The inspection shall be carried out by our skilled QA/QC engineers with the measuring instruments in accordance with our ISO-9001:2000 procedure.

Inspection Point

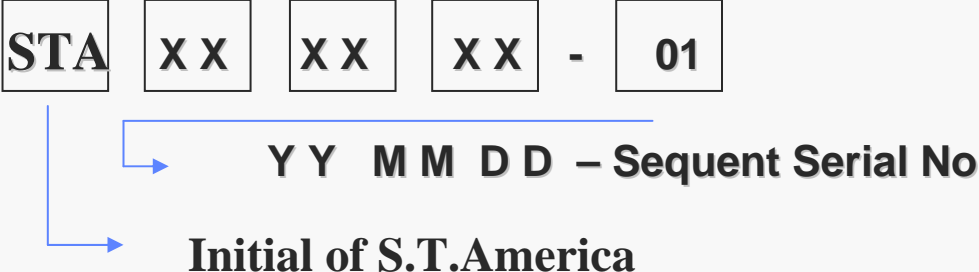
- 1) Dimension (Drawing Spec.)
- 2) Welding
- 3) Annealing
- 4) Scratch
- 5) Bubble
- 6) Cleaning
- 7) Flatness / Roughness
- 8) Others



Inspection Instruments/Maker

		INSPECTION METHOD INSTRUMENT	MAKER
DIMENSION	ID, OD	PRECISION VIDEO MEASURING SYSTEM	MICROVU
	THICKNESS	DIGITAL CALIPERS, DIGIMATIC MICROMETERS, HEIGHT GAUGES,..	MITUTOYO
	ID (Groove)	PRECISION VIDEO MEASURING SYSTEM, DIGITAL CALIPERS	MICROVU, MITUTOYO
	ANGLE	3D COORDINATE MEASURING MACHINES PRECISION VIDEO MEASURING SYSTEM	ZENITH, MICROVU
	ROUGHNESS	SURFACE ROUGHNESS TESTER	MITUTOYO
VISUAL	INSPECTION STANDARD	SCRATCH, BUBBLE, OTHERS	
	LIGHT	LUX 700 ~ 800	
ANNEALING	STRESS	STRESS TESTER	TOSHIBA

Marking of Serial number **for the tracking**

Serial No. Marking	 <p> STA XX XX XX - 01 YY MM DD – Sequent Serial No Initial of S.T.America </p>
Marking Position & Method	<ol style="list-style-type: none"> 1. For Tubes (Outer, Inner, Process Tubes) - Emboss & Engrave 2. For Boats, Pedestal, others - Engrave marking with laser marker (case by case) 3. For Rings and other etch parts - Engrave marking with laser marker

MISSION STATEMENT

- 1. To make Customers happy & satisfy with high quality products, good prices, reliable delivery time and best services.*
- 2. To get World Market Leadership for Quartzware, Silicon ware and other specialty materials for semiconductor industries.*

Thank you

www.stamerica.com